



Wall Mount Vanity Installation Instructions

Other installation instructions available
at www.woodpro.com

Tools and Supplies Needed:

Tools

- Level
- Tape measure
- Power Drill
- Saber/keyhole saw
- Phillips screwdriver

Supplies

- Hardware Bag containing:
- Support Strip
 - 3 1/8" Bracket Screws
- Properly Braced Wall**
- See Step 1.

Directions:

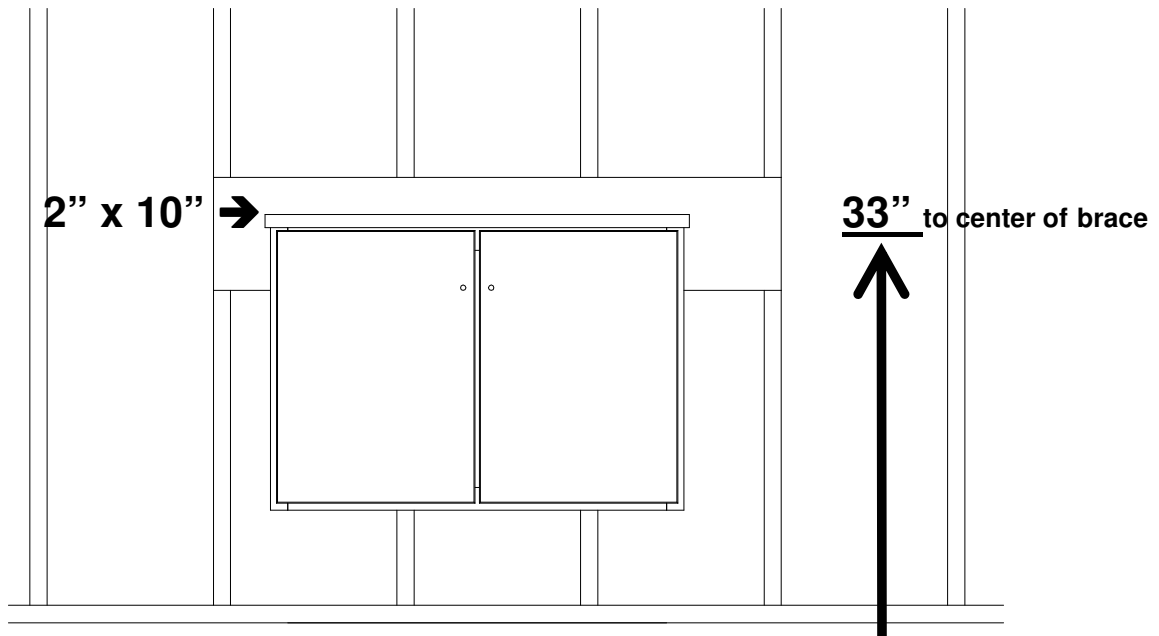
1. Ensure the wall is properly braced.

- Center a 2"x10" brace 33" above the floor. *It must be cut into the wall studs and long enough to attach to a stud on each side of the cabinet.*
- Attach brace to studs according to local building codes. *If no code applies, attach the brace to **each** stud with at least three 16-penny framing nails. Brace may be larger than 2"x10".*
- Finish wall with appropriate wall covering.



Warning!

The horizontal wall brace is required.
Failure to properly brace the wall will result in out-of-warranty product failure, and **possibly injury or death.**



2. Remove Cabinet from the Carton.

- Remove loose pieces and drawers.

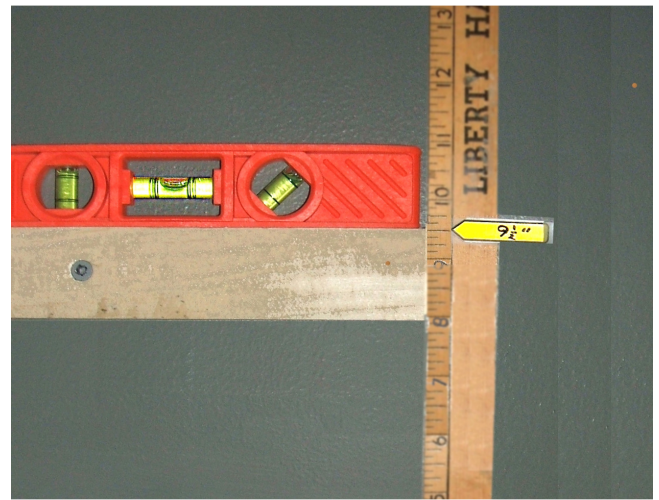
3. Mark and Cut Plumbing Holes in Vanity Back.

- Check or replace all pipe fittings.

4. Install Support Strip.

- Mark the center of the Support Strip.
- Mark the wall where the center of the middle vanity will be.
- Mark a spot 9 3/4" above the floor.
- Position the **top** of the Support Strip on the mark.
- Line up the mark on the Support Strip with the mark on the wall.
- Screw one side of the Support Strip into a stud with provided screw.
- Check Support Strip for level.
- Screw the other side of the Support Strip into a different stud.

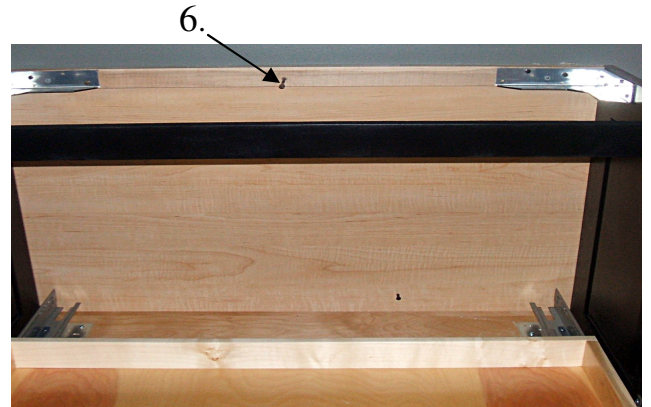
Photo Note: The yellow arrow is 9 1/2" above the floor. The cabinet rests where the level is shown.



5. Set the vanity on the Support Strip



Use a competent assistant. Lifting heavy, oversized items can cause serious injuries.



6. Install one or two 3 1/8" screws through the wood back frame.

- Position them near the center of the cabinet.
- They give additional support to the vanity, especially if it's longer than 36".

7. Install six of the 3 1/8" screws in each Metal Bracket.

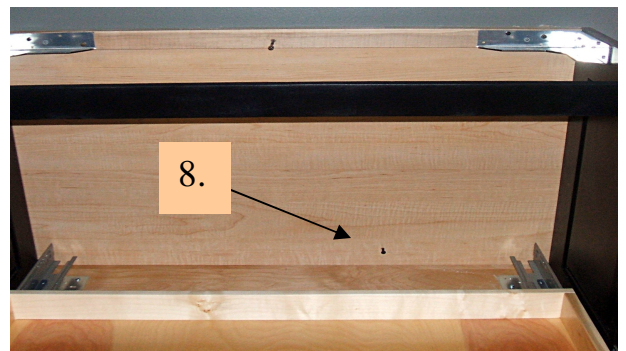
Screw into the Horizontal Brace inside the wall.



8. Install a 3 1/8" screw near the vanity base.

- Screw into a stud—Hide the screw behind a drawer when possible.

Important! This screw prevents people from lifting the bottom of the vanity away from the wall.



9. Install the remaining items.