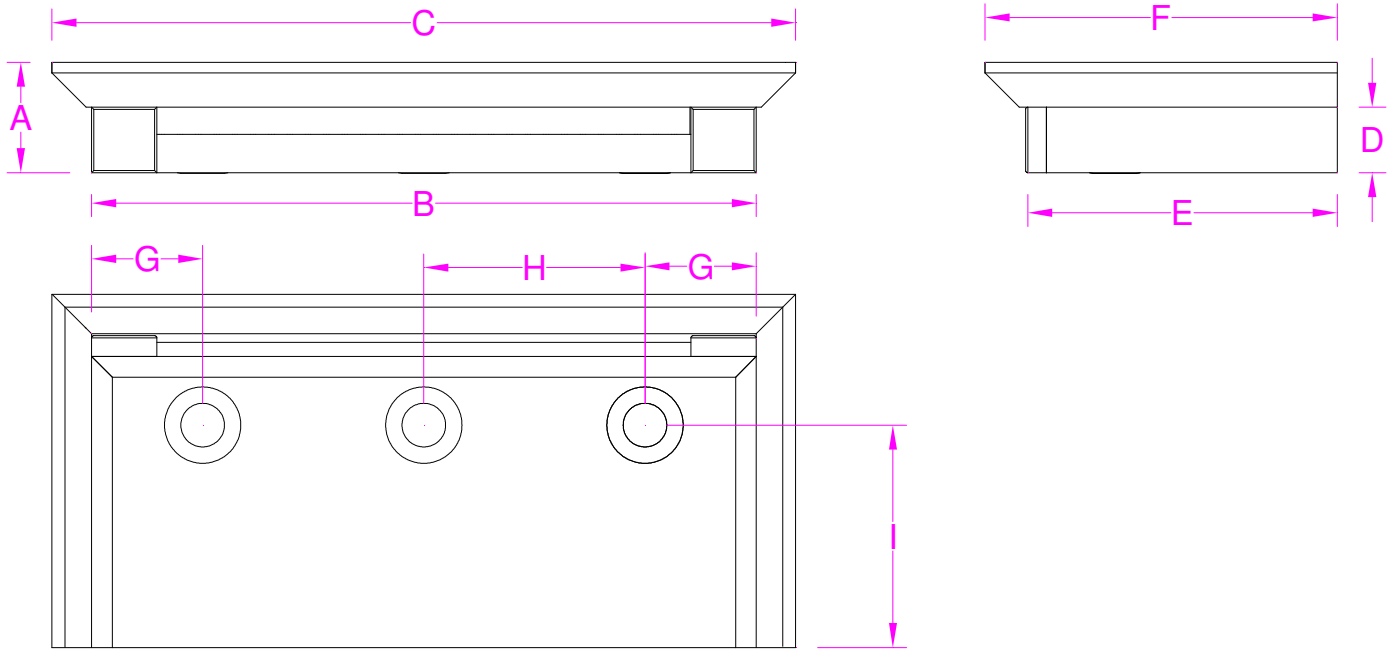




Flyover Specifications

Molding Overlay Collections

Tuscany and Ulverston



| | FLY-OVER | | Crown Width C | Height D | Depth E | Crown Depth F | Spacing from edge to light G | Spacing between lights H | Spacing from Back I | Number of Lights |
|---|-------------|------------|---------------------|-------------|------------|---------------------|------------------------------------|--------------------------------|---------------------------|---------------------|
| | Height A | Width B | | | | | | | | |
| LT21FL- | 4 1/8 | 21 | 23 1/2 | 2 3/8 | 11 1/4 | 12 3/4 | 4 7/8 | 5.5/8 | 8 | 3 |
| LT24FL- | 4 1/8 | 24 | 26 1/2 | 2 3/8 | 11 1/4 | 12 3/4 | 4 7/8 | 8 | 8 | 3 |
| LT30FL- | 4 1/8 | 30 | 32 1/2 | 1 1/2 | 11 1/4 | 12 3/4 | 4 7/8 | 7 1/4 | 8 | 4 |
| LT36FL- | 4 1/8 | 36 | 38 1/2 | 2 3/8 | 11 1/4 | 12 3/4 | 4 7/8 | 7 | 8 | 5 |
| LT42FL- | 4 1/8 | 42 | 44 1/2 | 2 3/8 | 11 1/4 | 12 3/4 | 4 7/8 | 8 1/2 | 8 | 5 |
| LT48FL- | 4 1/8 | 48 | 50 1/2 | 2 3/8 | 11 1/4 | 12 3/4 | 4 7/8 | 8 | 8 | 6 |
| Fly-Over Lights for over Breakfront Center Mirrored Cabinets | | | | | | | | | | |
| LT24FLB- | 4 1/8 | 24 | 26 1/2 | 2 3/8 | 14 1/4 | 15 3/4 | 4 7/8 | 8 | 12 | 3 |
| LT30FLB- | 4 1/8 | 30 | 32 1/2 | 2 3/8 | 14 1/4 | 15 3/4 | 4 7/8 | 7 1/4 | 12 | 4 |