



# Mirrored Cabinet - Breakfront and Cascade Installation Instructions

Use these instructions **PLUS** those for Mirrored Cabinet - Surface Mount

## GENERAL CABINET DESIGN

A Breakfront Mirrored Cabinet is made up of an extra deep center mirrored cabinet with lights and either a left or right side cabinet (without lights) or more commonly both a left and right side cabinet (see Figure 1). A Cascade Mirrored Cabinet is similar except the center cabinet is the same depth as the side cabinets (see Figure 2)

Each cabinet piece will come in a separate carton. This concept is used to provide smaller, less heavy pieces and to minimize shipping problems.

## GENERAL INSTALLATION SEQUENCE

1. Install the center cabinet which has lights built-in.
2. Install the side cabinet(s).

## SPECIFIC INSTALLATION INSTRUCTIONS

Follow the Installation Instructions for the following plus the additional instructions on this sheet.

- Mirrored Cabinet - Surface Mount
- Bath Light

**Note:** When deciding the height to hang the breakfront mirrored cabinet please note that the lower the cabinet is hung the greater the chance of bumping your head when bent over the vanity bowl.

### FIRST

*Do this after a cleat long enough for all cabinets has been attached to wall and the deep cabinets with light has been completely installed.*

**Attach side cabinet(s) to center cabinet using the two 1 1/4" #8 screws provided (see Figure 2).**

### Recommendation and Warning:

Be sure to use the 1 1/4" screws for attaching cabinet to cabinet and use the longer screws for attaching cabinet to wall.

Since you may have to remove the cabinet later to put plastic anchors in wall (for attaching cabinet to wall) it is recommended that initially you only install the top screw for assembling the side cabinet to center mirrored cabinet and then add the second screw before installing the shelves.

### SECOND

**Attach side cabinet(s) to wall and do all remaining steps according to Mirrored Cabinet - Surface Mount Installation Instructions.**

Figure 1

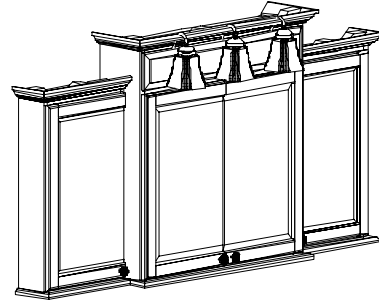


Figure 2

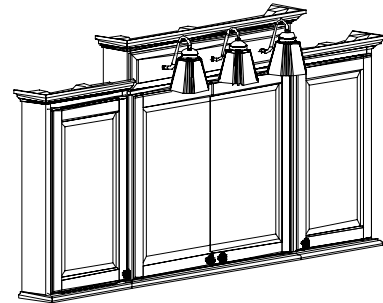
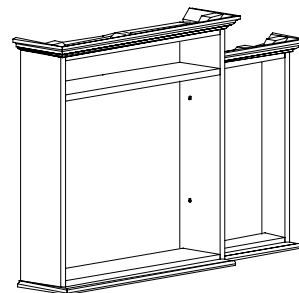


Figure 3



Shown without doors for viewing purposes only for normal installation you should leave the doors on.